



GRAMIN BANK OF ARYAVART  
HEAD OFFICE  
LUCKNOW

HO/A&S/VKS/439

DATE 17.01.2015

**WEBSITE NOTICE**

**ELECTRICAL, DATA CABLING, AC WIRING WORK TENDER OF FEROZABAD REGIONAL OFFICE**  
**(Only empanelled furnishers of Gramin Bank of Aryavart can quote)**

Gramin Bank of Aryavart invites your competitive rates for the electrical, AC Wiring, data cabling work at the premises of Ferozabad Regional office situated in Ferozabad under the following terms and conditions.

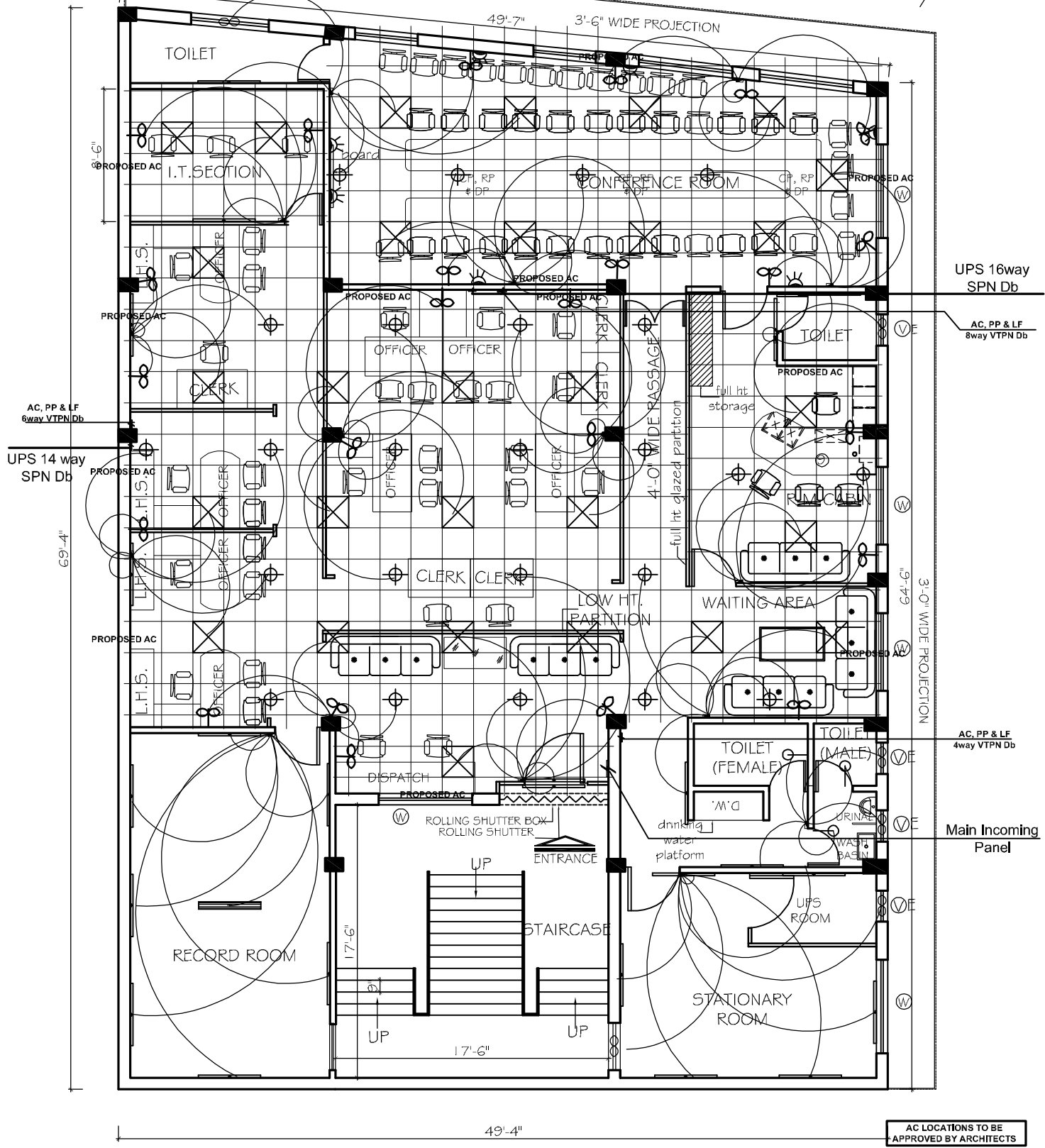
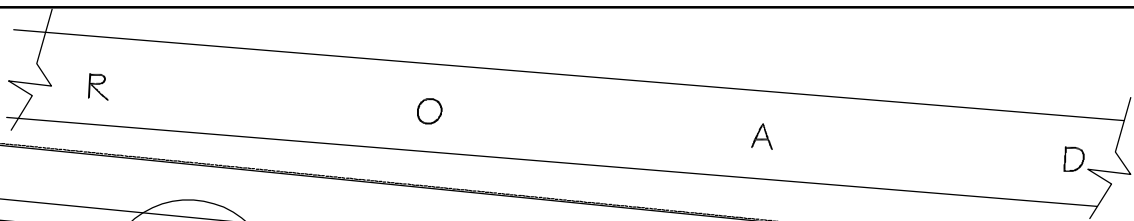
S.NO.	OFFICE	ADDRESS	PHONE NUMBER OF CONTACT PERSON
1	Ferozabad Regional office	<b>GRAMIN BANK OF ARYAVART</b> Ferozabad Regional office Jaleser Road Ferozabad (U.P.) <b>PIN -283203</b>	Shree Chandra Sekhar, Regional Manager Phone number =8172900158

**TERMS AND CONDITION**

Please submit your rates in closed envelope under following terms and conditions:-

1	The rates quoted should be inclusive of all type of charges, expanses, taxes, service tax FOR at the Regional office.
2	Please quote your competitive rate on the enclosed tender formats.
3	If it is found that the material used is not the same as mentioned in list of items then the bank has the right to reject the work and the material.
4	If any type of change is required in electrical, AC Wiring, data cabling work it should be duly approved by the Chief Manager, administration and services department head office and the Regional Manager.
5	If the rates quoted by you are accepted to the Bank then the electrical, AC Wiring, data cabling work is to be completed in given time, please ensure that if the work is not completed in given time then the bank has the right to impose the penalty at the rate of 5.00% for 5 days delay.
6	Rates quoted will be valid for 180 days from the date of opening of quotation.
7	Please ensure the measurement, quantity, items are tentative and may increase or decrease as per the requirement of bank. The variation may be upto 20%.
8	After the work is completed it will be duly verified by the Regional managers of Ferozabad Region as well as the Architect authorized for supervision / verification of work at the Ferozabad Region.
9	Please ensure that the bank will not provide any advance against the work order however payment in full or in parts will be made only after the work completed and verified by the Architect and Regional manager.
10	Bank will retain 5 % cost of bill for 180 days while making the payment to cover the defect liability period from the date of payment of final bill.
11	Please ensure that before starting the work at the Regional office, the raw material to be used may be duly verified by the Chief manager or any other officer deputed from Head office.
12	The quotation in a closed envelope must reach at head office positively on or before 23.01.2014.
13	Please ensure that quoting the lowest rate is not necessary, bank may allot the work and in this regard the bank has the full right to accept or reject the one and all tenders without any notice.
14	The architect for electrical, air-conditioning, data cabling work at Ferozabad Regional office is M/S Gunjan and associates.
15	Please submit your competitive rates in a closed envelope positively on or before 23.01.2015 the quotation will be opened on 23.01.2015 itself at Bank's Head office at 11.00 AM in presence of committee members. All empanelled furnishers (who quoted the rates) are requested to remain present at the time of opening of tenders. Please note that no separate invitation will be sent.
16	The tender form can be obtained from Bank,s website or from Head office from 17.01.2015

**(B.B.NANDA)**  
**GENERAL MANAGER**



**job title**  
**PROPOSED LAYUOT PLAN OF GRAMIN BANK OF ARYAWART REGIONAL OFFICE AT FIROJABAD.**

**Drg. Title**  
 LAYOUT PLAN

**Date :-**  
 AUG-2014

**NORTH :-**

**Chkd. By**

**GUNJAN AND ASSOCIATES**  
 ARCHITECTS, ENGINEERS, INTERIOR AND LANDSCAPE DESIGNERS.

3/55, VIPUL KHAND, GOMTI NAGAR, LUCKNOW-226010  
 Phone: 2303118, 9839018489, 9838818489

**Gunjan and Associates.**  
**Architects, Engineers, Interiors &**  
**Landscape Designers.**  
 141, Sainik Nagar, Lane-9,  
 Raebareli Road Lucknow-226002.  
 Phone: 0522-2441118, 9839018489  
**E-Mail: arunjan@yahoo.com**

**BILL OF QUANTITY FOR PROPOSED ELECTRICAL WORKS**  
**GRAMIN BANK OF ARYAWART REGIONAL OFFICE, FIROZABAD**

S.No.	Particulars	Unit	Qty.	Rate	Amount
1	A - Light, Fan, 16amp/6 amp points Light, Fan & 6A switch points: S/F of light, fan & exhaust fan points controlled thru Anchor ROMA/ MK/ Siemens make Modular switches complete with MS / GI box, cover plate & frame. It shall have 3x1.5 sq.mm FRLS stranded Cu. Wire (Finolex/Anchor/skytone) in 19mm PVC conduit pipe concealed in wall/ floor/ panelling/ partitions or on the ceiling as per requirement. The work shall also include for cutting chase for conduits in the wall/ floor (Without damaging the building/wall) along with clamping the conduit at every 450mm interval & finally finishing the surface & matching the same with the existing surface. The rate should include the cost of all materials, labour, T&P, taxes & levies, scaffolding, shifting of furniture, carting away the debris and cleaning the floor etc. The job shall be complete & to the entire satisfaction of the Bank.	Point	110		
2	6A switch & Socket points: S/F of 6A switch socket point with Anchor ROMA/ MK/ Siemens modular type 6A Dura switch with neon and 6Amp. socket c/w MS / GI box, cover plate & frame. The connections shall be made with 3 x 1.5sq.mm FRLS stranded Cu. Wire (Finolex/Anchor/skytone) as per requirement. The rate should include the cost of all materials, labour, T&P, taxes & levies, scaffolding, shifting of furniture, carting away the debris and cleaning the floor etc. The job shall be complete & to the entire satisfaction of the Bank.	Point	17		
3	Circuit Wiring ( Light, fan, 6Amps Switch points) : Supply & laying of circuit wiring for light, Fan & 6 Amp. Switch points with 3x 1.5sq.mm FRLS Cu stranded wires laid in 19mm conduit pipe concealed in wall/ floor/ panelling/ partitions or on the ceiling as per requirement. The work shall also include for cutting chase for conduits in the wall/ floor (Without damaging the building/wall) along with clamping the conduit at every 750mm interval & finally finishing the surface & matching the same with the existing surface. The rate should include the cost of all materials, labour, T&P, taxes & levies, scaffolding, shifting of furniture, carting away the debris and cleaning the floor etc. The job shall be complete & to the entire satisfaction of the Bank.	m	450		
4	Circuit Wiring (Single 6/16Amps power Points) : S/F of circuit wiring for 6/16 Amp. Switch points with 2 x2.5 + 1x 1.5sq.mm FRLS Cu stranded wires (Finolex/Anchor/skytone) laid in 19mm conduit pipe concealed in wall/ floor/ panelling/ partitions as per requirement. The work shall also include for cutting chase for conduits and boxes, if required, in the wall/ floor (Without damaging the building/wall) along with clamping the conduit at every 750mm interval & finally finishing the surface & matching the same with the existing surface. The rate should include the cost of all materials, labour, T&P, taxes & levies, scaffolding, shifting of furniture, carting away the debris and cleaning the floor etc. The job shall be complete & to the entire satisfaction of the Bank. (10ckts)	m	195		
	1 officer LHS o/s record rm, 2 clerk + officer o/s IT, 1 D/w, 2 officers central, 1 PP CR on wall, 3 PP on CR Table)				

5	<p>Circuit Wiring for 2Nos. 6/16Amps power Points: S/F of circuit wiring for 6/16 Amp. Switch points with 2x 4.0 + 1x 1.5sq.mm FRLS Cu stranded wires (Finolex/Anchor/skytone) laid in 19mm conduit pipe concealed in wall/ floor/ panelling/ partitions as per requirement.The work shall also include for cutting chase for conduits and boxes, if required, in the wall/ floor (Without damaging the building/wall) along with clamping the conduit at every 750mm interval &amp; finally finishing the surface &amp; matching the same with the existing surface.The rate should include the cost of all materials, labour, T&amp;P, taxes &amp; levies, scaffolding, shifting of furniture, carting away the debris and cleaning the floor etc.The job shall be complete &amp; to the entire satisfaction of the Bank. 2nd PP to be inter looped with first PP(Total 11 Ckts) 1 dispatch, 1 LHS central officers, 1 IT section, 1 LAN printer, 3 central area, 1 RM &amp; 3ckts for PP on wall</p>	m	230
6	<p>16Amp. Switch Sockets : S/Fof 6/ 16A Anchor ROMA/ MK/ Siemens modular switch &amp; socket complete with MS / GI box, cover plate &amp; frame for power points.The work shall also include for cutting chase for conduits if required, in the wall/ floor (Without damaging the building/wall) &amp; matching the same with the existing surface.The rate should include the cost of all materials, labour, T&amp;P, taxes &amp; levies, scaffolding, shifting of furniture, carting away the debris and cleaning the floor etc.The job shall be complete &amp; to the entire satisfaction of the Bank.</p>	Each	35
<u>B - AIR CONDITIONING</u>			
1	<p>Circuit wiring with 2x4.0sq.mm + 1x 1.5sq.mm FRLS Cu stranded wires (Finolex/ Anchor/ Skytone) to be laid in 19mm PVC pipe heavy duty laid &amp; concealed in wall/ floor/ panelling/ partitions as per requirement. The job includes supply &amp; fixing of 4in FM with 25A DP MCB and 25A DP socket IP 20 Siemens. The rate should include the cost of all materials, labour, T&amp;P, taxes &amp; levies, scaffolding, shifting of furniture, carting away the debris and cleaning the floor etc.The job shall be complete &amp; to the entire satisfaction of the Bank. INCLUDING THE WIRING</p>	lcn	14
<u>C - UPS</u>			
1	<p>S/laying of 4 core 16sq.mm XLPE insulated armoured Aluminium conductor cable from main Panel to 4way TPN Db in the UPS room to be laid in heavy duty 25/32mm PVC conduit/ pipe &amp; run on surface or concealed in wall/ floor/ flase ceiling including connections at both ends with lugs. (Finolex/Skytone/ Cable corpn.)</p>	m	25
2	<p>UPS Power Input System: SITC of 4way TPN single door Db IP 20 horizontal Complete with 1no. Incoming 63A 3P MCB and two numbers 63A 2P MCB's to regulate supply for UPS (1w +1Sb) complete in all respect as required and to the satisfaction of the bank.</p>	Set	1
3	<p>Supply &amp; laying of incoming &amp; outgoing wiring to &amp; from UPS with 2x 6 + 1x 2.5sq.mm (earthing) stranded Cu. wire conductor (Finolex/Anchor/Skytone) to be laid in 20/25 mm flexible PVC pipe heavy duty to UPS incoming &amp; from UPS outgoing to DP MCB in SPN Db.</p>	m	12
4	<p>UPS out put - S/F of 2way metal Box c/w 63A 2P MCB including all connections with lugs as required to the entire satisfaction of the bank including inter looping of both the MCB's.</p>	Each	2
5	<p>Supply &amp; Fixing following SPN Db single door IP 20 as under as required to the entire satisfaction of the bank at following locations</p>		
5.1	<p>Location 1- Wall o/s Confrence Room central area - 16way SPN Db c/w 32A 2P MCB and 13 nos 6/10A 1P MCB's (3 conf. Rm, 2RM, 8 officers &amp; clerks central area)</p>	Each	1
5.2	<p>Location 2- LHS Wall near two centryal officers on left - 14way SPN Db c/w 32A 2P MCB and 11nos 6/10A 1P MCB's (2 dispatch, 3 officers LHS, 2 offciars o/s IT, 2 IT &amp; 2 LAN)</p>	Each	1

6	Supply & laying of Circuit wiring for LHS & RHS UPS Dbs with 2 x 4.0 + 1 x 1.5sq.mm (earthing) stranded Cu. wire conductor (Finolex/ Anchor/ Skytone) to be laid in 19mm PVC rigid conduit pipe heavy duty for distribution of UPS circuits including termination with proper size of lugs.	m	60
5	Wiring for computer terminal points with 2x2.5sq.mm + 1x 1.5 sq.mm stranded Cu.wires to be laid in PVC conduit 1" dia/ vertical drops heavy duty laid & concealed in wall/ floor/ panelling/ partitions or above false ceiling as per requirement. -From UPS - SPN Db - circuits for computer stations	m	320
6	S/F of terminal boards for computer terminals fitted with 3 x 6 Amp. switch & socket, 1 no indicator on teak wood board covered with Hylam sheet & fixed with copper/ brass screws, rawl plug etc. All material to be of approved make	Nos.	24
7	S/burying of Dual pipe technology (Pipe in Pipe) earthing electrode having GI 80mm O/D pipe with 25 micron coating, 3metres long. The installation shall be thru earth auger. The space between two pipes and hole between pipes & earth auger shall be filled with Highly conductive & Non corrosive chemical compound. The job also includes S/F of GI strip clamp with two holes (with SS/GI bolts & nuts) on the electrode & taking two earthing leads of 25x 5mm GI strip (Assumed length of 10m - beyond 10m to be paid extra) upto Main panel complete in all respects with guaranteed E/N voltage of less than 2 volts and resistance less tahn 1 ohms. The 25x 5mm GI strip shall be terminated on a separate 6way earthlink. The connections for Panel earthing & earth bus in the panel should be taken from this earthlink. (1for power system &1 for UPS). The distance between two earthing pits to be 10ft or more.	Job	1
9	Supply & Fixing of 25 X 5 mm. GI strip from earthing to Db's or main panel.if required beyond 10m	m	12
10	S/F of G I Strip earth clamp <u>D - DISTRIBUTION MAINS</u>	Each	1
1	S/F of 3 nos. 160A Kit kat set with heavy duty neutral link and making its connection from electronic meter c/w wooden board etc.	Set	1
2	SITC of L T panel made of CRCA sheet 1.8mm dust proof, vermin proof as under - All switchgears to be of L& T. The panel to be provided with double busbar system so that AC supply is cut off when DG set supply from changeover is available. All switchgears to be of Siemens/ ABB/ L& T. Incomer - 100A 3P MCCB 25Ka with adjustable thermal & Magnetic trip unit Bus Bars - 100A c/w Ammeter & voltmeter, selector switches, Indication lamps etc. Changeover TPN 100A- ABB / socomac OUTGOINGS - 63 Amp TP MCB - 3Nos. for AC, PP and L&F Db 63 Amp TP MCB - 1nos. for UPS 63 Amp TP MCB - 1nos. Spare 32A DP MCB - 3nos. - Fire, signage & 1 spare Cable entry from top & bottom - removable gland plates (bottom at 2 points) c/w powder coated Grey paint (two coats) with name labels for all incoming & outgoing feeders. The panel shall be complete in all respects including all accessories such as earthing bus, Air ventilators, lifting hooks etc.	Set	1
3	S/ laying of XLPE insulated armoured Al. Conductor cable including cost of lugs, cable glands etc. - Skytone/ Havells 3.5c x 25sq.mm from Kit Kats to Main panel 4c x 16sq.mm for 3nos. AC, PP and LF Db's	m m	6 46
4	SITC of flush mounted VTPN Db double door IP 42 complete in all respects as under - Siemens/ ABB/ Hagers Front Office area		

4.1	<p>8way For AC, PP &amp; LF distribution Db - Siemens - 8GB0408VRC or equivalent wall O/s conference room in central area</p> <p>63 Amp 3P - MCB 10kA neutral to be directly connected to neutral bus</p> <p>5nos. 32A 1P-MCBs 10 KA - for AC ckts - (3nos. CR &amp; 2nbos. Central area)</p> <p>6nos. 20A 1P-MCBs 10 KA - for twin PP ckts - 2nd PP to be interlooped (3nos. For CR for wall PP &amp; 1 for officers &amp; 2 for clerks in central area)</p> <p>6nos. 16A 1P-MCBs 10 KA - for single PP - 3nos. On CRm table &amp; 1 on wall in CR, 2 officers central area</p> <p>4no. 10A 1P-MCBs 10 KA - for L &amp; F</p> <p>2nos. 6A 1P-MCBs 10 KA - for L &amp; F</p> <p>1 no. - Blanking Plates</p>	Each	1
4.2	<p>4way For PP &amp; LF distribution Db - Siemens - 8GB0404VRC or equivalent - On wall in toilet area entrance</p> <p>63 Amp 3P - MCB 10kA neutral to be directly connected to neutral bus</p> <p>3nos. 32A 1P-MCBs 10 KA - for AC ckts - (1 RM, 1 waiting &amp; 1 dispatch)</p> <p>2nos. 20A 1P-MCBs 10 KA - for twin PP ckts - 2nd PP to be interlooped (1RM &amp; 1 dispatch)</p> <p>1no. 16A 1P-MCBs 10 KA - for single PP - (D/w)</p> <p>4no. 10A 1P-MCBs 10 KA - for L &amp; F</p> <p>2nos. 6A 1P-MCBs 10 KA - for L &amp; F</p> <p>Nil - Blanking Plates</p>	Each	1
4.3	<p>6way For PP &amp; LF distribution Db - Siemens - 8GB0406VRC or equivalent - On wall o/s record room</p> <p>63 Amp 3P - MCB 10kA neutral to be directly connected to neutral bus</p> <p>4nos. 32A 1P-MCBs 10 KA - for AC ckts - (1no. IT &amp; 3nos. LHS)</p> <p>3nos. 20A 1P-MCBs 10 KA - for twin PP ckts - 2nd PP to be interlooped (1 IT, 1LAN prinbter &amp; 1 LHS officers central)</p> <p>3nos. 16A 1P-MCBs 10 KA - for single PP - (1 officer o/s Record, 2nos. Officer + clerk o/s IT section)</p> <p>3no. 10A 1P-MCBs 10 KA - for L &amp; F</p> <p>2nos. 6A 1P-MCBs 10 KA - for L &amp; F</p> <p>3 nos. - Blanking Plates</p>	Each	1
6	<p>Glow sign Board - Circuit wiring with 2x2.5sq.mm + 1x 1.0sq.mm stranded Cu. conductor (Finolex/Anchor/Skytone) to be laid in 19 mm PVC pipe heavy duty laid &amp; concealed in wall/ floor/ panelling/ partitions or above false ceiling as per requirement. The rates should include the cost of all materials, labour, T&amp;P, taxes &amp; levies, scaffolding, shifting of furniture, carting away the debris and cleaning the floor etc.The job shall be complete &amp; to the entire satisfaction of the Bank.</p> <p>E-DG SET SUPPLY</p>	m	10
1	<p>S/laying of 3.5cx 25sq.mm XLPE insulated Armoured Aluminium conductor cable from proposed DG set to Changeover switch including its connections at both ends with lugs to be laid in 25mm dia rigid PVC /flexible conduit on surface</p>	m	14
	<p>F- EARTHING</p>		
1	<p>S/burying of Dual pipe technology (Pipe in Pipe) earthing electrode having GI 80mm O/D pipe with 25 micron coating, 3metres long. The installation shall be thru earth auger. The space between two pipes and hole between pipes &amp; earth augar shall be filled with Highly conductive &amp; Non corrosive chemical compound. The job also includes S/F of GI strip clamp with two holes (with SS/GI bolts &amp; nuts) on the electrode &amp; taking two earthing leads of 25x5 mm GI strip (Assumed length of 10m - beyond 10m to be paid extra) upto Main panel complete in all respects with guaranteed E/N voltage of less than 2 volts and resistance less tahn 1 ohms. The connections for Panel earthing &amp; earth bus in the panel should be taken from this earthlink. (1for power system &amp;1 for UPS). The distance between two earthing pits to be 10ft or more.</p>	Job	1

2	Supply & Fixing of 25 X 5 mm. GI strip from earthing to Db's or main panel.if required beyond 10m	m	15
<b>G - SUPPLY &amp; FIXING ITEMS</b>			
1	Supply of 3x36watts CFL recess mounted low glare luminaire with P5 Paralite louvre & decorative perforations complete with 3nos. 36w CFL lamps suitable for false ceiling - Philips FBS300 M 3xPLL36W IC P5 or equivalent as approved by Bank/ Architect	Each	0
2	S/F of 2x36w CFL fitting recess mounted decorative direct -indirect lighting luminaire suitable for 2nos. 36watts CFL (Compact Fluorescent Lamps PL -L - 36) low glare D6 Optics Phillips - FBS450 2xPL-L36W IC M2 - AG/PW/FA (Colour FA- Fiery Amber/ AG - Aqua Green or PW - Pearl White to be decided by architect) or equivalent complete with 2nos. 36w CFL lamps.	Each	29
3	S/F of 2x36w FTL fitting surface / suspended standard Mirror Optics Luminaire suitable for linear 2nos. 36watts FTL (Fluorescent Tube lamps) Phillips - Maxlite TCS350 2xTL-D36W IC M1 c/w 2nos. 36w FTL lamps. (18 hanging + 13 beams)	Each	0
3	Supply of 2x36watts - Proton - TMS 021 - Mounting rail for fluorescent lamps with special integral lamp holder & bracket hanging type c/w 2nos. 36w Tube lights- Philips - TMS021 2xTL-D36W or equivalent as approved by Bank/ Architect (2hanging in record room )	Each	1
4	Extra for fixing of Tube fitting as pendent with two nos. 19mm dia 16swg rigid steel conduit double check nuts spring loaded flanges or MS hook fabrictaed from 25x3mm flat iron duly grouted in the ceiling upto 3.5m height including painting with synthetic enamel paint along with supply of all materials, labour, T & P etc. as required for proper completion of work	Each	1
5	S/F of recess mounted circular green LED downlighter Philips BBS 1170 1DxLED -5000PSU WH complete in all respects	Each	
6	Supply of 2x18w CFL recess spot - Recessed downlighter with patterned specular reflector in compact size suitable for horizontal lamps Phillips - FBS095 2x18W PL-C HF	Each	24
7	S/F of 1x36watts Fluorescent Tube light surface mounted fitting c/w cost of 1x36w fluorscent tube light - Phillips -TARANG ELECTRONIC 4' TMC090 1xTLD36W HF (HPF Batten) complete in all respects	Each	23
8	S/F of Angle bulb holder c/w cost of 18W CFL lamp	Each	3
9	Supply of wall mounted fan 400mm sweep - Bajaj/ Crompton/ Alstom/ Usha	Each	24
10	Supply of Ceiling fan 1200mm sweep double ball bearing c/w 5 step electronic regulator - Bajaj/ Crompton/ Alstom/ Usha	Each	0
11	Supply of fresh air fan 300mm sweep - Bajaj/ Crompton/ Khaitan / Usha	Each	6
12	Supply of 18" sweep 1400RPM big exhaust fans	Each	0
<u>Fixing of Fittings &amp; Fixtures</u>			
1	Fixing of 2x36watts CFL & 2x36w & 2x18w CFL light fitting & ceiling mounted lights	Each	54
2	Fixing of 1x36watts Fluorescent Tube light fitting	Each	23
3	Fixing of wall mounted fan - Bajaj/ Crompton/ Alstom/ Usha	Each	24
4	Fixing of Ceiling fan - Bajaj/ Crompton/ Alstom/ Usha	Each	0
5	Fixing of fresh air fan 12" - Bajaj/ Crompton/ Khaitan / Usha	Each	6

6	Fixing of Heavy duty exhaust fans Big H-TELEPHONE CABLING	Each	0
1	Telephone point with 2/0.61 tinned wire recessed sheet box 3"x3"x2" including bakelite sheet with 2 pin socket or ceiling rose	Point	8
2	Wiring for extension points	Point	6
3	Supply & fixing of MDS box	Each	1
4	Supply & fixing of 10 pair Crone boxes	Each	1

I - DATA CABLING

Conduiting for data cabling under floor & verticals with 25mm dia PVC pipe including laying of GI draw wire complete with junction box, circular box, elbows, bends & other accessories as required by chase cutting on floor, wall, through partition or over false ceiling. The work includes making good all damages to original finish, painting etc. as required.

Per m. 190

Supply & laying of CAT - 6 cables Giga speed D -Link/ Systemex make through pre-laid rigid PVC conduit as directed by the consultant from Server to Switch, Switch to computer data socket including interconnection with connectors as required complete in all respects.

m 360

Supply & Fixing of XL RJ 45 toolless information outlet Grey colour cat 6 Giga speed Systemax/ D link make including interconnection with connectors as required complete in all respects.

Per Pc. 26

Supply & fixing of 7ft Grey colour Patch chord Giga speed Systemax/ D link make

Each 26

Supply & fixing of 3ft Grey colour Patch chord Giga speed Systemax/ D link make

Each 26

S/F of 24Port Jack Panel fully loaded systemex make

Each 1

S/F of 4U wall mounted rack c/w fan etc as required

Each 1

S/F of Cable Manager as required

Each 2

**Total Cost of works**

-



**LIST OF MATERIALS OF APPROVED BRAND AND/OR MANUFACTURER**

1. The contractor shall use materials in their work subject to inspection, prior to dispatch, by Owner or his authorized representative of any materials not otherwise specified, shall be in accordance with the following list. All materials not otherwise specified shall be in accordance with the latest Indian Standard Specifications, where such exists with prior approval of Owner/Architects. The contractor shall be bound to offer sample of materials, which are claimed to be conforming to I.S Specifications, for testing at an approved testing laboratory.
2. Contractor shall purchase all materials from the makers or their authorized stockist only. Necessary documentary evidences must be produced to the Owner or their authorized representative on demand.
3. Contractor shall be bound to supply items or any make of the items as per the choice of the Owner/Architects.

**A CIVIL / FURNISHING WORK**

<b>S.No</b>	<b>Description</b>	<b>Approved Brand/Manufacturer</b>
1.	Cement	M/s ACC, M/sPrism ,M/s Jaypee
2.	Wood	First class Steam beach wood or as specified
3	Polish	MRF Polyurethane
4	Termite treatment	Chloroporyphos 20% concentration / Dusban /Terminator Pidlite make
5.	Soft Board	Celotex
6	Flase Ceiling and Sections	Grid Tiles---Armstrong, St Gobain Gypsum India,
7	Aluminium sections	Hindalco, Jindal, Indal
8	Vitrified Floor tiles	RAK, Asian, Regent , Kazaria,nitco
9	Block boards / Plywood/Flush doors	M/s Green, Duro , M/s Archid, M/s Century,CORBET No alternate brands from the same manufacturer allowed
10	Laminates	M/s Green lam (New Mika), M/s Merino, M/s heritage, M/s Century , M/s Archid
11	Hardware-(Aluminium)	Approved design, brand, quality & manufacturer with ISI mark.
12.	Hardware	ALL HARDWARE TO ONLY GODREJ
13	Drawer/ cabinet handles/locks	Dorset / Kitch/ Godrej/hettich
14	Magnet Catcher	Supreme, Excel
15	Drawer/ cabinet shutter Accessories	Ebbco, Hettich, Hafele
16	Synthetic Enamel Paints, Distemper or Plastic Paint best quality of make as approved	Asian Paints Ltd), Berger Paints (India) Ltd.(Luxol) , ICI, Nerolac.
17	Venetian blinds/ Verticals	Vista
18.	Glazing	M/s. Modiguard, M/s asahi india, M/s Saint Gobain.
19.	Door Closer/floor spring	Godrej, Dorma ,Ozone
20.	Glue Addressive	Fevicole, Century

21.	Door handles /Locks	Godrej,
22	Screw	Excel, GKW
23	Glass brass bracket	Flora, Perfect,
24	POP bag or readymade work	Diamond (Super fine quality)
25	GI section for Partitions, panel, false ceiling	Same Company as of Gypsum Bard or Mineral Fibre tiles
26	Film	Alkor, Garware,3M
27	Plants	
28	Wire management holes	Twinkle
29	Cement Board	E board, Bison,
30	Vitrified floor tiles adhesive / Grout	Bal Endura, Dr. Fixit Fevimate XL with Polymer modified Mortar, ROFF Granite tile adhesive
31	Texture	Spectrum, Heritage, Acro paint
32	Upholestery	Raymonds
33	Sanitary Fixtures	Cera, Hindware, Parryware
34	GI Pipes and accessories	TATA
35	CI Pipes and accessories	NECO
36	Plumbing Fittings	Jaquar Continental series
37	Ceramic Tiles	Kajaria ( High Lighter Concept)
38	Chairs /Sofa	Godrej, Delite /Debono
<b>ELECTRICAL</b>		
1	MCCB	MDS legrands, ABB, GE, SIEMENS
2	Changeover	Indo Asian/ HPL Socomec / GE/Standard stangaurd
3	Distribution board	MDS /Standard / Indo Asain / HPL
4	MCB	MDS / Standard / Indo Asain / HPL
5	Cable	Gloster / Rallison / Incab / CCI
6	Copper wire	Rallison/Finolex
7	Switch / Socket / Call bell and accessories	Anchor /Havells/ CPL / MDS/ Philips
8	Electrical Light Fittings / Fixtures Complete	Philips
9	Wall Fan / Ceiling Fan / Exhaust Fan	Khaitan/Polar/Bajaj

NOTE: In case any make is mentioned in bill of quantity, it will take precedence over those given in the "Acceptable Makes of Materials" above.

The choice of make at a specific site will have to be in consent with the project architect.